

Advanced Risk Radar

Contents

Advanced Risk Radar

AI Mined Public Data	3
HSE Summary	4
HSE Events	5
HSE Per Supplier Detail	6
Environment Agency	6
Insolvency.....	7
Employment Tribunal Cases	7
Judiciary Tribunal Cases	8

Financial Health

Overview	9
Organisation Comparison	9
Project/Building Comparison	10
Project/Building Impact	10
Risk Radar – CL Financial Score	11
Risk Radar – Probability of Distress	11
Risk Radar – Cash at Risk	12
Financial Details	12
Head Office Geomap	12

Risk Summary

Available through the supplier’s profile	13
--	----

Risk Radar

Available through the supplier’s profile	14
Financial Risk Model	14
Financial Ratios	15
Associated Insolvencies	16
Risk Score History	16

Risk Checker

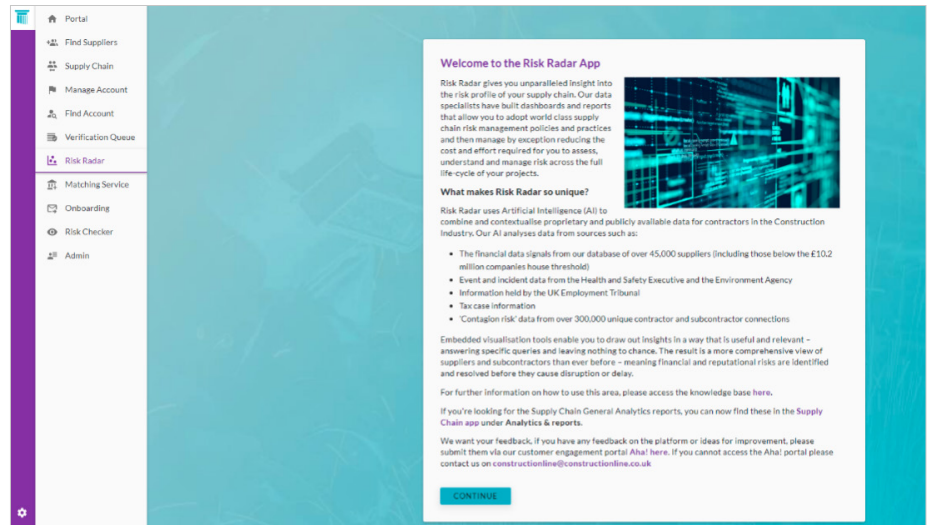
Risk Checker	17
--------------------	----

Advanced Risk Radar

Advanced Risk Radar

To access Risk Radar, you need to select the Risk Radar app on the left-hand side menu. If you do not yet have this application available, **please contact our team.**

This guide will take you through Risk Radar, covering AI Mined Public Data and Financial Health.



AI Mined Public Data

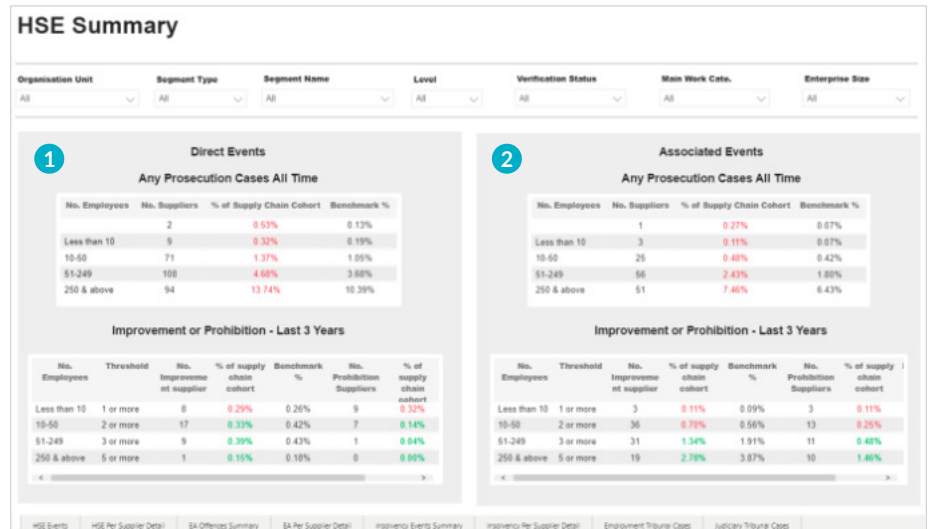
This uses publicly available sources of information and matches it to your supply chain, to give you, by exception, information on events within your supply chain. This can be used to report on your entire supply chain, divisions within your organisation, categories within your supply chain e.g. Category 1 suppliers or for specific projects. This covers:

- 1. Health and Safety:** We use data from the Health and Safety Executive (HSE) website and match it to data that we have on your supply chain to identify any health and safety incidents within your supply chain.
- 2. Environmental:** We use data from the Environment Agency website and match it to data that we have on your supply chain to identify any types of Environment Agency events you may have within your supply chain.
- 3. Insolvency:** We use data from the Gazette and Company Watch to track insolvency events across your supply chain.
- 4. Employment/Judiciary Tribunal:** We use data from Gov.uk linking to suppliers within your supply chain who have tribunal cases against them.

HSE Summary

This uses data from the Health and Safety Executive matched to your supply chain to give you visibility of Health and Safety events within your supply chain.

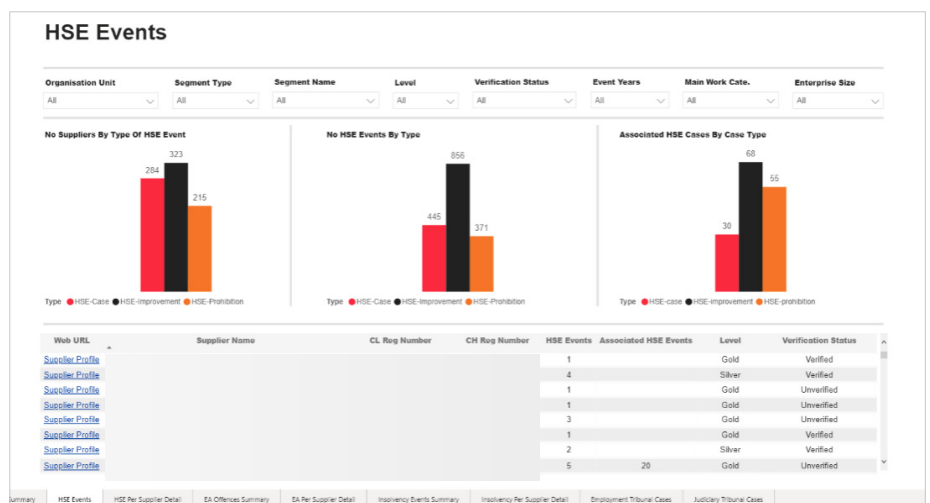
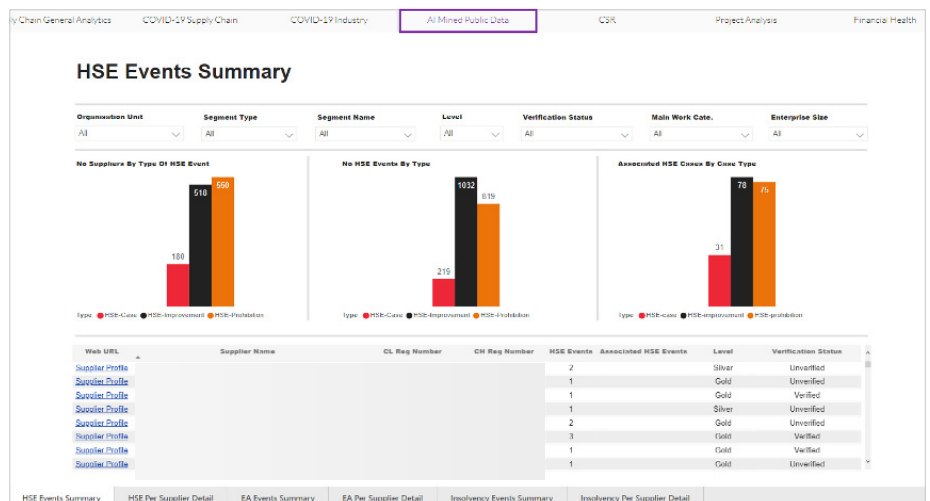
1. On the left you have direct events covering any prosecution cases through time and improvement or prohibition notices within the last three years.
2. On the right are associated events, by way of a linked director.



HSE Events

This uses data from the Health and Safety Executive matched to your supply chain to give you visibility of Health and Safety events within your supply chain. This covers:

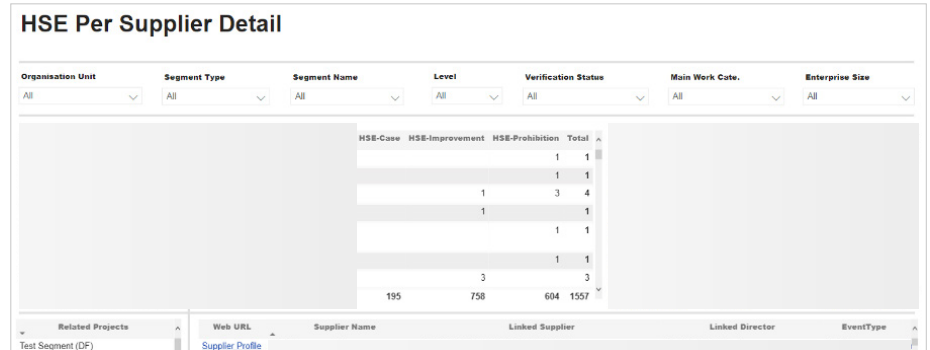
1. Health and Safety Summary. This shows the HSE events within your supply chain compared to the industry average.
2. The number of HSE events within your supply chain, division, segment or project depending on the criteria applied. The number of events is nearly always higher than the number of suppliers, as some suppliers have multiple HSE events.
3. The number of suppliers that have had a health and safety event will show the number of suppliers for each event type.
4. The associated events. This identifies events that are not directly attributed to an organisation in your supply chain, but they are linked to an event. For example, through a director that may have worked for a business with HSE events, and now works for an organisation within your supply chain.



Note, the graphs, as well as the drop downs, can be used to filter the list of suppliers shown.

HSE Per Supplier Detail

These analytics will give some extra detail on the HSE events. By selecting suppliers/subcontractors, you can update the detail. The report also shows the supplier detail along with the incidents they have had. Links on the right-hand side of the page allows users to link through to the details in the HSE website.

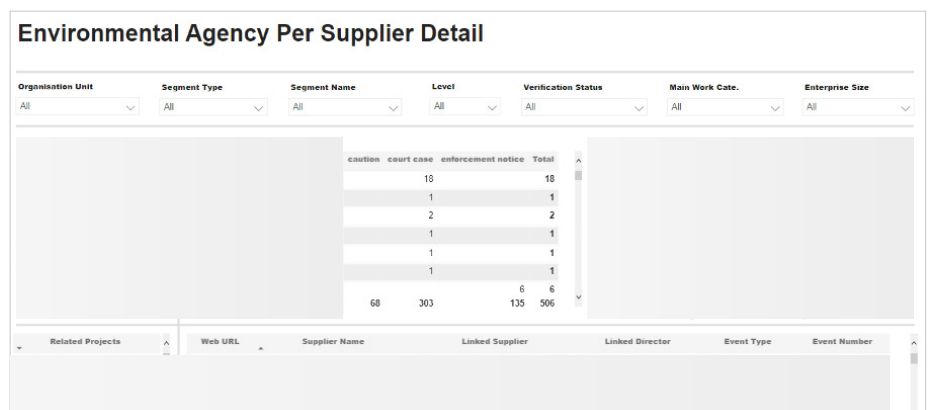


Environment Agency

This report shows the Environment agency events by the number of suppliers and type as well as the total number of events within your supply chain or a selected subset. The graphs can be used as filter criteria along with the drop-down filters at the top of the page.

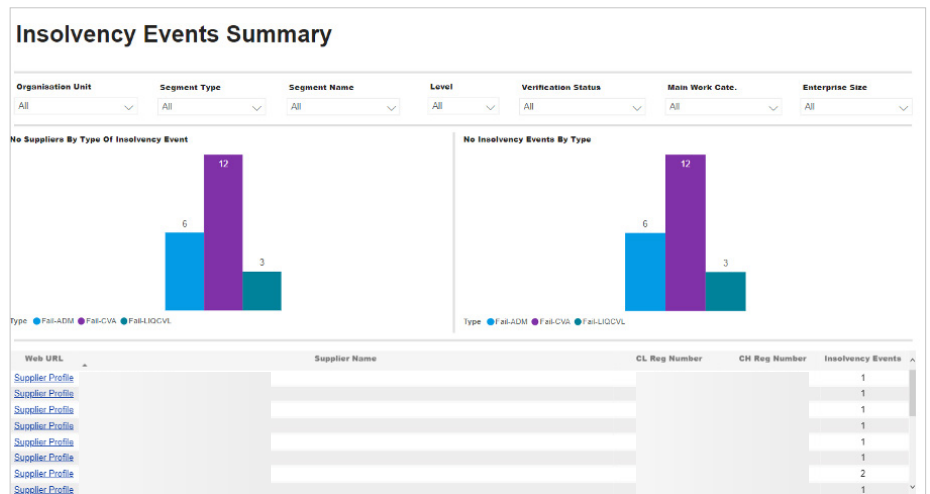


Environment agency per supplier detail shows the detail of the suppliers and the individual caution, court cases or enforcements.

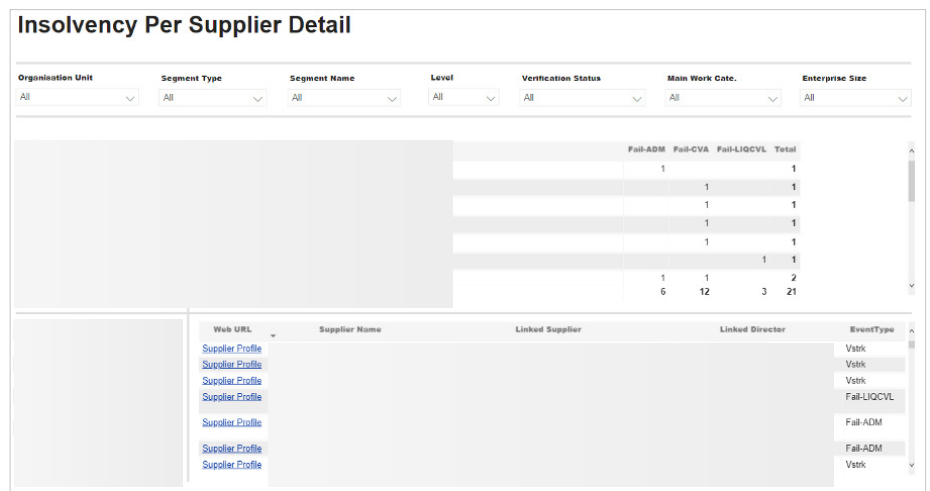


Insolvency

This shows the details of any insolvency, by supplier as well as the number of events.

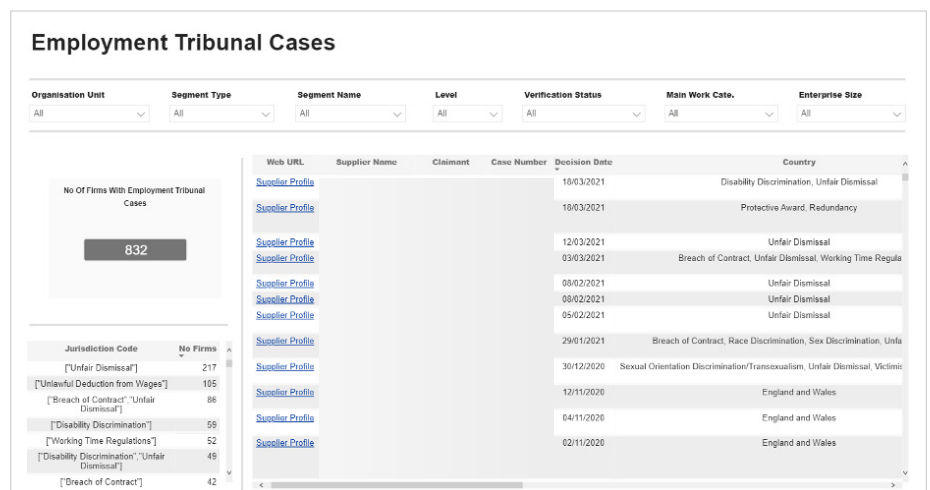


Insolvency list by suppliers is available on the next tab.



Employment Tribunal Cases

This report shows the number of firms with Employment Tribunal Cases allowing you to further split by type of case i.e. Unfair Dismissal, Discrimination. With a link taking you directly to the case at Gov.uk.



Judiciary Tribunal Cases

Provides a clear overview of how many firms within your supply chain have judiciary tribunal cases, with the ability to filter by type of case i.e. VAT penalties, Aggregates Levy. There is a link alongside each supplier's details taking you directly to the gov.tribunals decision.

Organisation Unit	Segment Type	Segment Name	Level	Verification Status	Main Work Cate.	Enterprise Size
All	All	All	All	All	All	All

Web URL	Supplier Name	Chairmen Special Commissioners	Date Of Decision	Decision Number	Decisions To D.
Supplier Profile				TC 07961	http://financeandtax.decisions.tribunals.gov
Supplier Profile				TC 07941	http://financeandtax.decisions.tribunals.gov
Supplier Profile				TC 07969	http://financeandtax.decisions.tribunals.gov/id/4699201files/11931
Supplier Profile				TC 07773	http://financeandtax.decisions.tribunals.gov
Supplier Profile				TC 07648	http://financeandtax.decisions.tribunals.gov
Supplier Profile				TC 07618	http://financeandtax.decisions.tribunals.gov
Supplier Profile				TC 07464	http://financeandtax.decisions.tribunals.gov
Supplier Profile				TC 07201	http://financeandtax.decisions.tribunals.gov
Supplier Profile				TC 06405	http://financeandtax.decisions.tribunals.gov
Supplier Profile				TC 06460	http://financeandtax.decisions.tribunals.gov
Supplier Profile				TC 06447	http://financeandtax.decisions.tribunals.gov
Supplier Profile				TC 06273	http://financeandtax.decisions.tribunals.gov

Financial Health

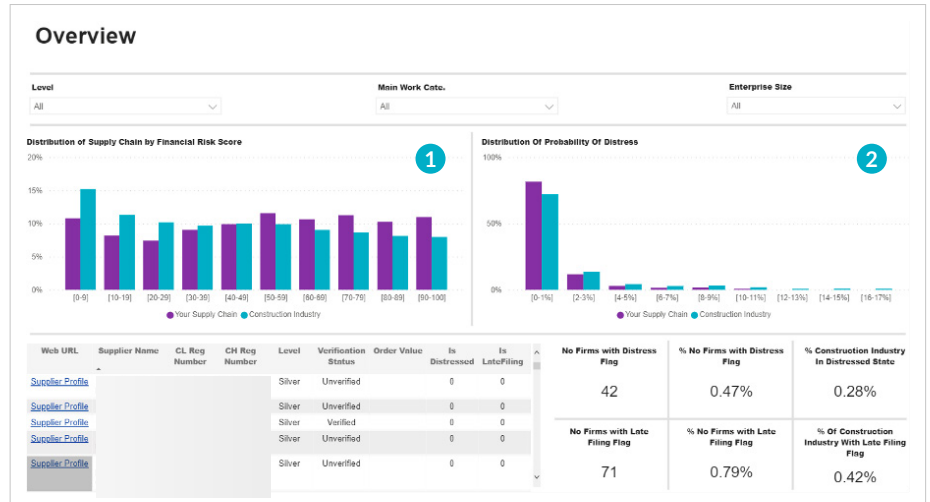
Navigate to the tab Financial Health within the Risk Radar app.

There are a few terms to familiarise yourself with in this section:

- 1. Risk Score:** Segmentation to help you focus your efforts on the areas of your business that are most critical. A rating of 10 corresponds to the highest risk and a rating of 1 the lowest.
- 2. Probability of distress:** Is the probability that a Distress Event will occur within one year or within three years, expressed as a percentage. A Distress Event could be a failure, reconstruction, or some other event indicative of acute financial distress.
- 3. Cash at Risk:** This uses the health score combined with the order spend with a supplier to arrive at the impact that any event would have. High spend and high-risk results in a higher cash at risk number. For this to work, details of spend need to be uploaded.

Overview

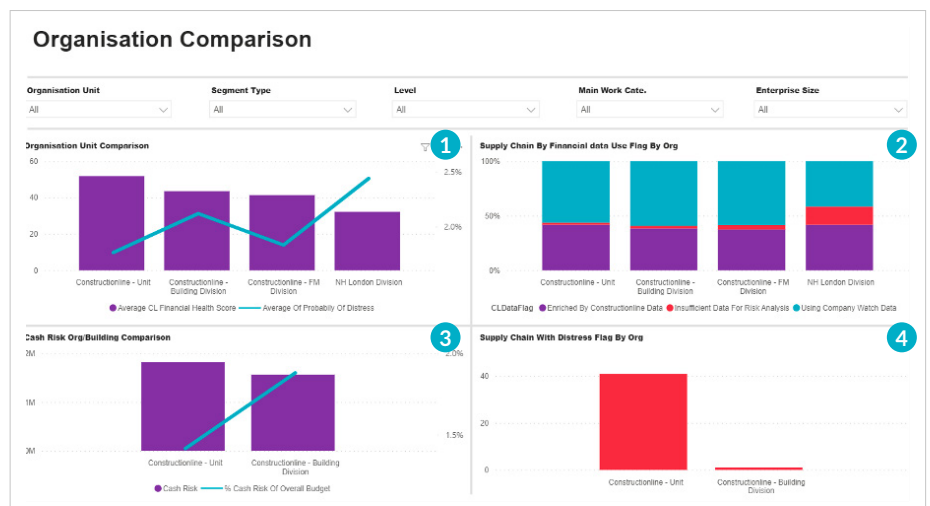
- 1. Top left:** Is the distribution of the supply chain by risk score, low is good, high is of more significant concern. This is compared to the rest of the industry.
- 2. Top right:** Shows the probability of distress, low is good, higher is of more significant concern.



Organisation Comparison

This page has four sections:

- 1. Top left:** Shows the cross-unit comparison of health and probability of distress.
- 2. Top right:** Shows where the data comes from, i.e. Constructionline, Company Watch or both.
- 3. Bottom left:** Shows the cash at risk; this is the overvalue x the higher-risk companies. Large order value with high-risk suppliers will show greater risk. This will be further explained in risk radar – cash at risk.
- 4. Bottom right:** Are those units with a distress flag.

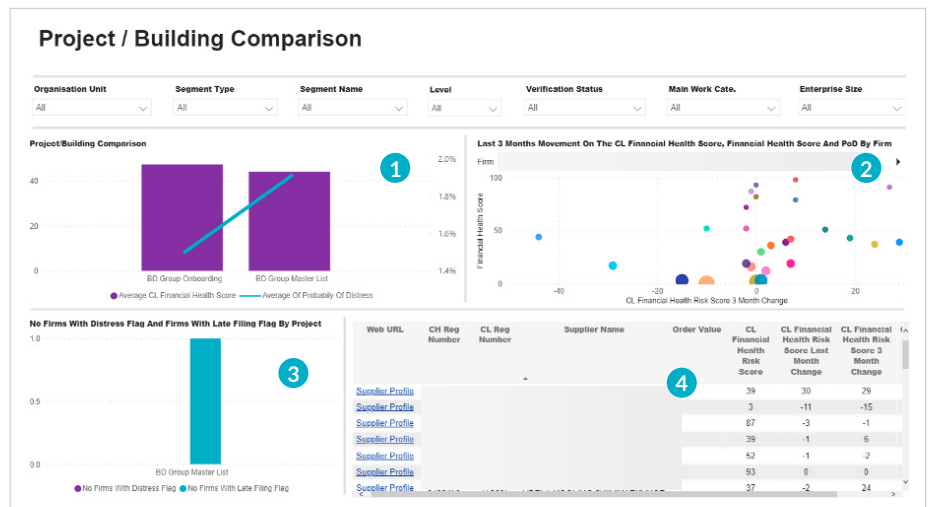


Project/Building Comparison

This page compares projects, this will allow you to look across your projects and understand which need the most attention.

This has four sections:

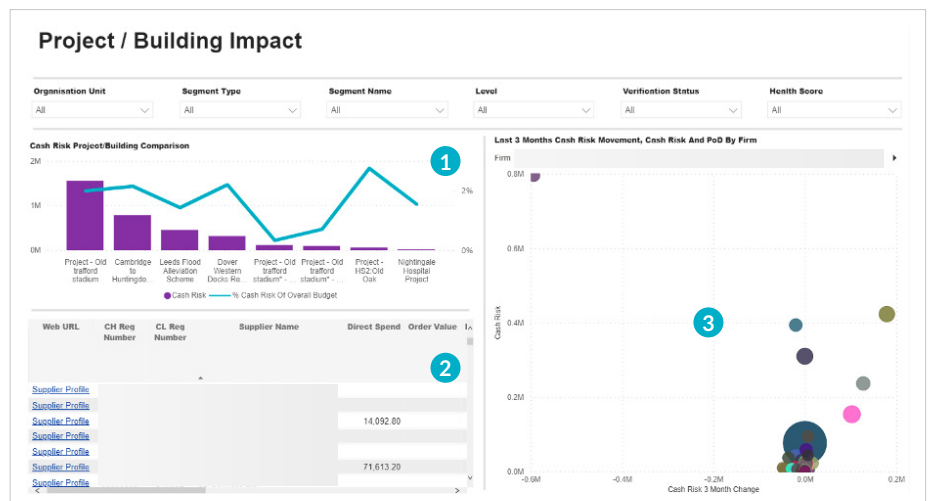
- 1. Top left:** Shows the cross-project comparison of health and probability of distress.
- 2. Top right:** Shows financial score against the movement in the score. This will be further explained for “Risk Radar – Financial Score”.
- 3. Bottom left:** This shows distress and late filing by the project.
- 4. Bottom right:** Shows the detail of the suppliers their risk score and three months of change.



Project/Building Impact

This page shows the cash at risk impact and movement of suppliers.

- 1. Top left:** Shows the cash at risk for individual projects.
- 2. Bottom left:** Updated list of suppliers based on the above chart.
- 3. Right:** This shows the detail of the cash at risk (vertical axis) along with the change in cash at risk (horizontal axis). In this view, the high change on the right are the areas that need to be looked at.

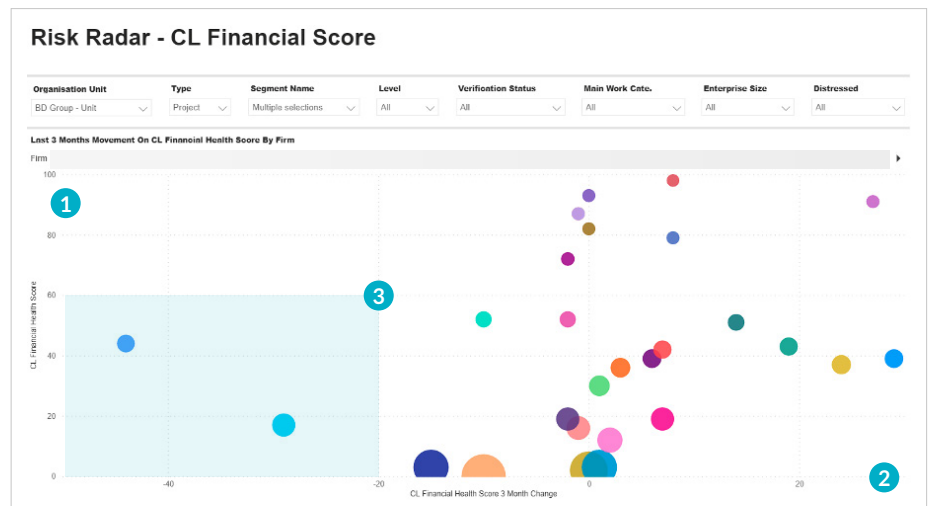


Advanced Risk Radar

Risk Radar – CL Financial Score

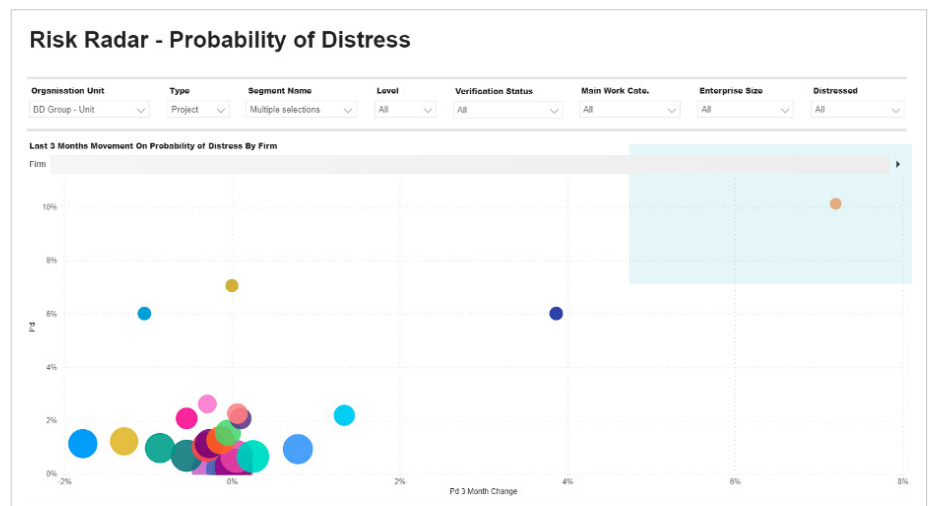
This tab is the financial score against the movement in the financial score.

1. On the vertical axis, we have financial health under 25 is seen as being at risk.
2. On the horizontal axis, we have movement. This is where we are looking at those suppliers who have had a negative movement in the last three months, on the left.
3. The bottom left quadrant is where we identify the concern.



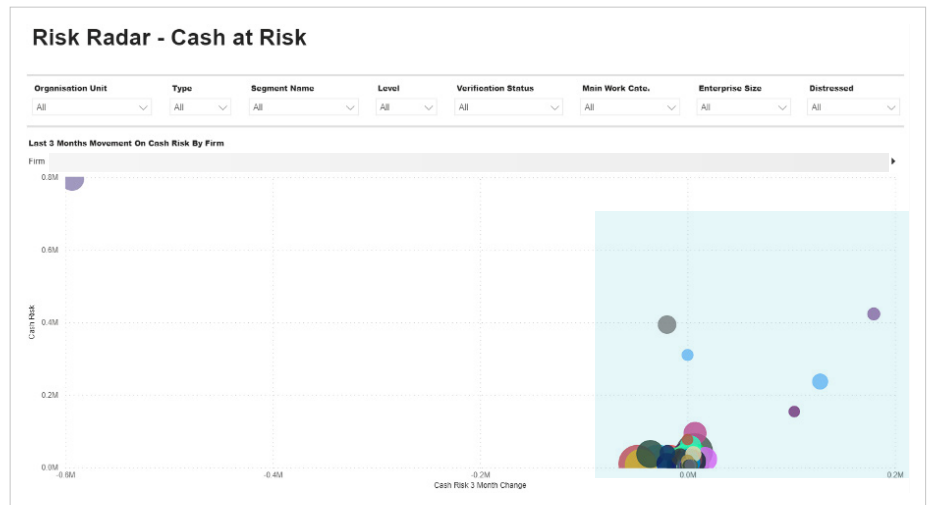
Risk Radar – Probability of Distress

This tab is the probability of distress (vertical axis) against the movement in the probability of distress (horizontal axis). The quadrant to keep an eye on here is the high probability and high change. See below.



Risk Radar – Cash at Risk

This tab is the cash at risk (vertical axis) against the movement in cash at risk (horizontal axis). The quadrants to keep an eye on here are the high movement shown on the right-hand side of the radar.



Financial Details

Providing you with an at a glance overview of all the suppliers in your supply chain, showing Turnover, Profit Before Tax and Net Worth. As ever giving you the ability to filter by unit, type, verification status, size etc and export the data.

Head Office Geomap

Local engagement, allowing you to see volume across your supply chain giving you a granular view of sustainability and SME across your local supply chain. Useful in the tendering process as you can see if your existing supply chain has coverage or not. With the ability to filter by project, region, verification status, subscription level, work categories and organisation size.

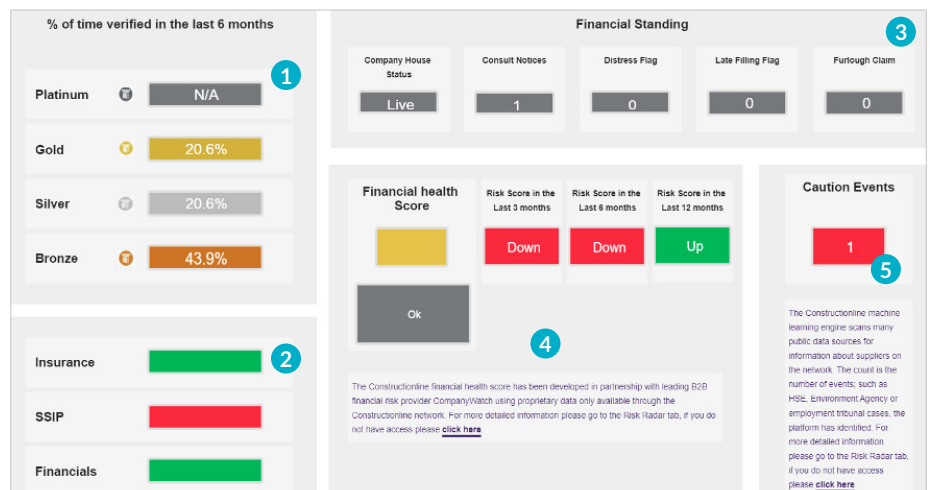
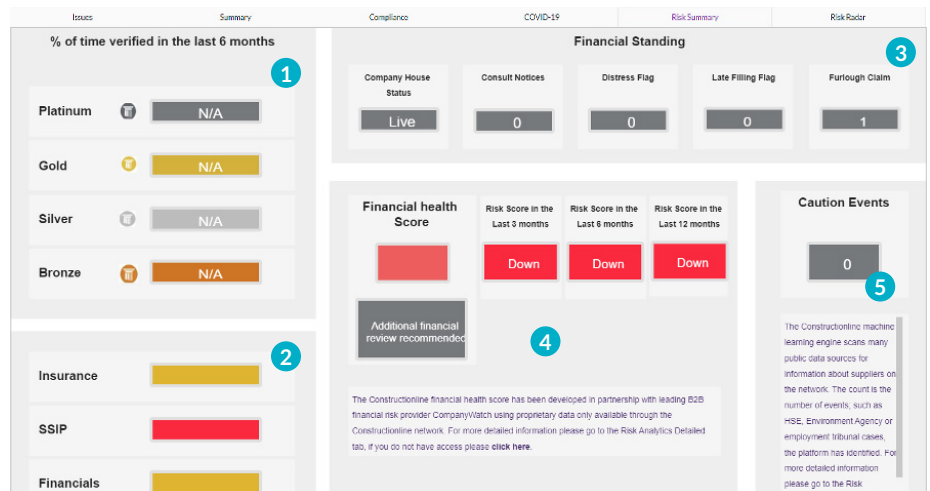
Advanced Risk Radar

Risk Summary – Available through the supplier’s profile

Giving you an overview of a supplier based on the following:

- 1. Top left:** Percentage of time verified in the last 6 months.
- 2. Bottom left:** What is the current status of a suppliers Insurance, SSIP & Financials, are they verified, unverified or due to expire.
- 3. Top Right:** Financial standing, is the supplier live on Companies House, does the supplier have any consult notices against them, have they been flagged as in distress, do they have a late filing flag and have they made a furlough claim.
- 4. Centre:** Financial health score, providing an overview of the suppliers’ financial health over the past 12 months, 6 months and 3 months with an overall red, amber or green rating. Using information gathered from Company Watch and our own proprietary data we have developed a financial health score. Green – their score is Good, Amber – their score is OK and Red – either Additional or Detailed financial review is recommended.
- 5. Bottom right:** Caution events, this count is the number of events, such as HSE, Environment Agency or employment tribunal cases, the platform has identified.

For more detailed information please go to the Risk Radar tab, if you do not have access, please contact our team.



The Risk Radar tab can be found on an individual supplier’s profile, within Find Suppliers, as highlighted in the image below. If you do not yet have this application available, please contact our team.

Risk Radar – Available through the supplier’s profile

The Risk Radar tab can be found on an individual supplier’s profile, within Find Suppliers, as highlighted in the image below. If you do not yet have this application available, [please contact our team.](#)

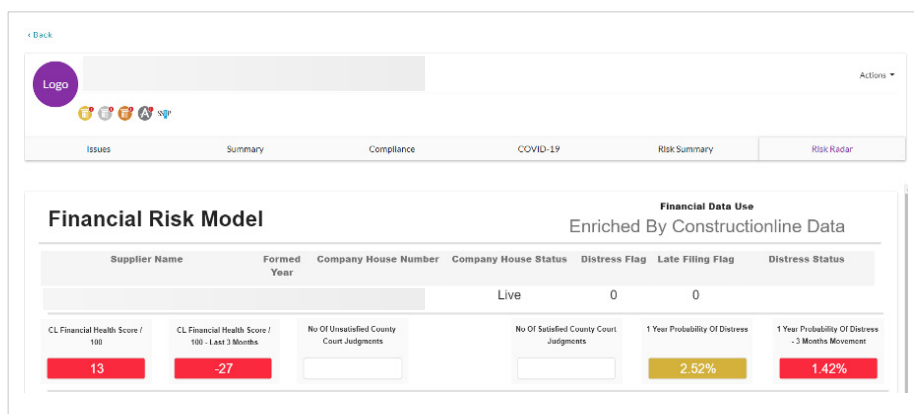
Financial Risk Model

The first tab is for financial risk.

We take information from Company Watch and enrich it with data from Constructionline, we have found that we have a better likelihood of predicting financial distress. There are a couple of reasons for this:

- We have full financial accounts irrespective of size, unlike data sources that rely on publicly held information which is only available for organisations with a turnover of £10.2m or more.
- Often suppliers will submit their accounts to us first as they need this to get their Constructionline verification status.

1. **Top right:** Tells you where the information is being drawn from.
2. **Second line:** Quick view of company status with Companies House, are there any distress or late filing flags.
3. **Third line:** CL Financial Health Score, movement within the last three months, Current credit limit, County Court Judgements and Probability of Distress.
4. **Bottom:** The financial data held by Company Watch and the financial data held by Constructionline.



One of the trends to look for is the movement on the probability of distress. See the above box on the right side. History of movement is also shown on the next tab, see below.

CL Financial Health Score ratings:

Red: 0 – 24

Amber: 25 – 49

Green: 50 – 100

Financial Ratios

With unrivalled insight into the financial health of subcontractors and suppliers to help you identify and mitigate supply chain risk. This powerful tool combines information from a broad range of data sources, with unrivalled visibility of suppliers' financial health, even for companies below the £10.2m turnover threshold.

Financial Risk Model	Financial Ratios	Risk Score History	Document Filing Events	CCJ History	Payment Performance	HSE History	Environment Agency History	Submissions	Employment Tribunal Data
----------------------	------------------	--------------------	------------------------	-------------	---------------------	-------------	----------------------------	-------------	--------------------------

Profitability Ratios			
	2021	2020	2019
Net Profit Margin aka Earnings Before Tax	28.21%	18.56%	
Return On Capital Employed	274.00%	156.60%	
Shareholders Equity	31.55%	34.96%	
Return On Net Assets	88.89%	47.72%	
Return On Equity	274.00%	156.60%	
Net Assets To Turnover	3.06	2.95	
Operating Profit			

Liquidity Ratios			
	2021	2020	2019
Current Ratio	0.46	0.28	
Acid Test Ratio	0.46	0.28	
Cash Ratio			
Net Working Capital as % of Sales	-11.95%	-14.46%	

Leverage Ratios			
	2021	2020	2019
Debt	0.68	0.65	
Debt to Equity	2.17	1.86	

Growth Rate %				
	2021 vs 2020	2020 vs 2019	2019 vs 2018	
Turnover	↑ 9.96%	↑ 5.27%		
PBT	↑ 67.10%	↑ 32.09%		
NetWorth	↓ -4.50%	↑ 457.73%		
Long Term Debt				
Short Term Liabilities	↑ 11.41%	↓ -47.22%		
Fixed Assets	↓ -11.85%	↓ -9.43%		
Current Assets	↑ 85.74%	↓ -53.63%		
Cash				

Stability Ratios			
	2021	2020	2019
Fixed Assets		216.10%	234.14%
Asset Turnover Ratio		3.15	2.57
Current Assets To Fixed Assets		0.47	0.22

Turnover Ratios			
	2021	2020	2019
Capital Turnover Ratio		9.71	8.44

Financial Risk Ratios			
	2021	2020	2019
Debt Equity		0.00	

There are a few ratios to become familiar with in this section:

- 1. Profitability Ratios:** Helps to measure the profitability of a company through the efficiency of business activity.
- 2. Liquidity Ratio:** The aim of the Liquidity Ratio is to determine the ability of a business to meet its financial obligations during the short-term and to maintain its short-term debt paying ability.
- 3. Leverage Ratios:** Looks at how much capital comes in the form of debt (loans) and assesses the ability of a supplier to meet its financial obligations.
- 4. Growth Rate %:** Comparing the year on year growth rate of a company.
- 5. Stability Ratio:** Is used to check whether the supplier is stable in the long run or not.
- 6. Turnover Ratio:** This type of ratio indicates the efficiency with which the suppliers' resources are utilised.
- 7. Financial Risk Ratio:** Measures how leveraged the company is and how it is placed with respect of its debt repayment capacity.

Associated Insolvencies

If the supplier has any associated insolvencies through a linked director they will be displayed on this tab.

Web URL	Supplier Name	Linked Supplier	Linked Director	Event Type	Event Date
Supplier Profile				Visit	28/01/2019
Supplier Profile				Visit	28/01/2019
Supplier Profile				Visit	01/05/2018
Supplier Profile				Visit	01/05/2018
Supplier Profile				Visit	01/05/2018
Supplier Profile				Visit	01/05/2018
Supplier Profile				Visit	01/05/2018
Supplier Profile				Visit	01/05/2018

Risk Score History

Allowing you to track a suppliers Risk Score.



Risk Score History | Document Filing Events | CCJ History | Payment Performance | HSE History | Environment Agency History

Finance Ratios | Associated Insolvencies | **Risk Score History** | Group Structure | Document Filing Events | CCJ History | Payment Performance | HSE History | Environment Agency History | Submissions | Employment Tribunal Data | Judiciary Tribunal Cases

Further tabs then show details of the filing history, group structure, any CCJs, Payment performance issues, HSE and EA issues. Although these can be checked against an individual supplier, not all suppliers will have an issue so if that supplier is already in your supply chain, it would make sense to view these features through the **Risk Radar App**, as this is where this information can be shown by exception, i.e. only those with an HSE issue.

Document Filing Events | CCJ History | Payment Performance | HSE History | Environment Agency History | Submissions | Employment Tribunal Data

Risk Checker

By entering a companies' legal entity name, Risk Checker will either give you an overview of a supplier if they are not registered with Constructionline or if they are with Constructionline will take you directly to their profile. Also available for foreign listed businesses.

The screenshot displays the 'Finance Risk Checker' interface. On the left is a navigation menu with options: Supply Chain, Manage Account, Find Account, Verification Queue, Risk Radar, Matching Service, Onboarding, Risk Checker (highlighted), and Admin. The main content area is titled 'Retail Sale in Non Spec Stores Freedom Food Bev Or Tobacco' and includes a 'Print' button. It features a large '43 +0' Company Watch Score with a progress bar, 'VIEW NOTIFICATIONS' (0 Critical, 4 Warnings, 0 Info), and '11 Total Court Judgements' (2 Satisfied, 9 Unsatisfied). Below this is a table for 'PUBLIC ACCOUNTS INFORMATION' with columns for 27/02/2021, 29/02/2020, and 23/02/2019. A 'COMPANY INFORMATION' sidebar on the right shows 'Directors 14' and a map. A 'DISCRETION INFORMATION' section is partially visible at the bottom.

	27/02/2021	29/02/2020	23/02/2019
Company Watch Score	↑ 43	↑ 43	36
Turnover	↓ £57,587,000,000	↑ £54,760,000,000	£53,911,000,000
Profit Before Tax	↓ £225,000,000	↓ £1,315,000,000	£1,674,000,000
Net Worth	↓ £12,325,000,000	↓ £13,253,000,000	£14,834,000,000
Long Term Debt	↓ £15,032,000,000	↑ £16,803,000,000	£8,969,000,000
Total Current Liabilities	↓ £15,997,000,000	↓ £17,927,000,000	£20,680,000,000